

# ACTIVITY REPORT

---

20  
24

# INTRODUCTION

---

2024 marked a year of transition and renewal for the CEC, with the appointment of a new President, Elisabeth Diaz, and a new Secretariat led by Isabelle Van de Gejuchte. Throughout the year, the network strengthened cooperation among its members, actively engaged in EU-funded projects, and further consolidated its role in European policy discussions on social inclusion and employment.

This report outlines the main activities carried out over the year, including project implementation, advocacy efforts, member meetings, and communication initiatives that have contributed to reinforcing the visibility, cohesion, and impact of the CEC network.



<b>CEC'S PRESENTATION AND OBJECTIVES</b>	....	<b>04</b>
<b>OUR METHODOLOGY</b>	.....	<b>05</b>
<b>CEC'S GOVERNANCE</b>	.....	<b>06</b>
<b>OUR BOARD</b>	.....	<b>06</b>
<b>OUR SECRETARIAT</b>	.....	<b>07</b>
<b>OUR AREAS OF WORK</b>	.....	<b>08</b>
<b>MEMBERS</b>	.....	<b>09</b>
<b>CEC ACTIVITIES</b>	.....	<b>13</b>
<b>PROJECTS</b>	.....	<b>13</b>
<b>SEMINARS</b>	.....	<b>15</b>
<b>MEETINGS AMONG CEC MEMBERS</b>	.....	<b>17</b>
<b>COMMUNICATION</b>	.....	<b>18</b>
<b>NEW MEMBER</b>	.....	<b>19</b>
<b>CEC PERSPECTIVES IN 2026</b>	.....	<b>20</b>



# CEC PRESENTATION AND OBJECTIVES



CEC – Acting for Social Inclusion is a Brussels-based European network of national and regional organisations working to support the social and professional integration of people facing barriers to employment.

## **OUR NETWORK**

- 1,600 local organisations across Europe
- Including integration services, schools, training centres, social enterprises, and residential services
- Supporting over 100,000 young people and adults

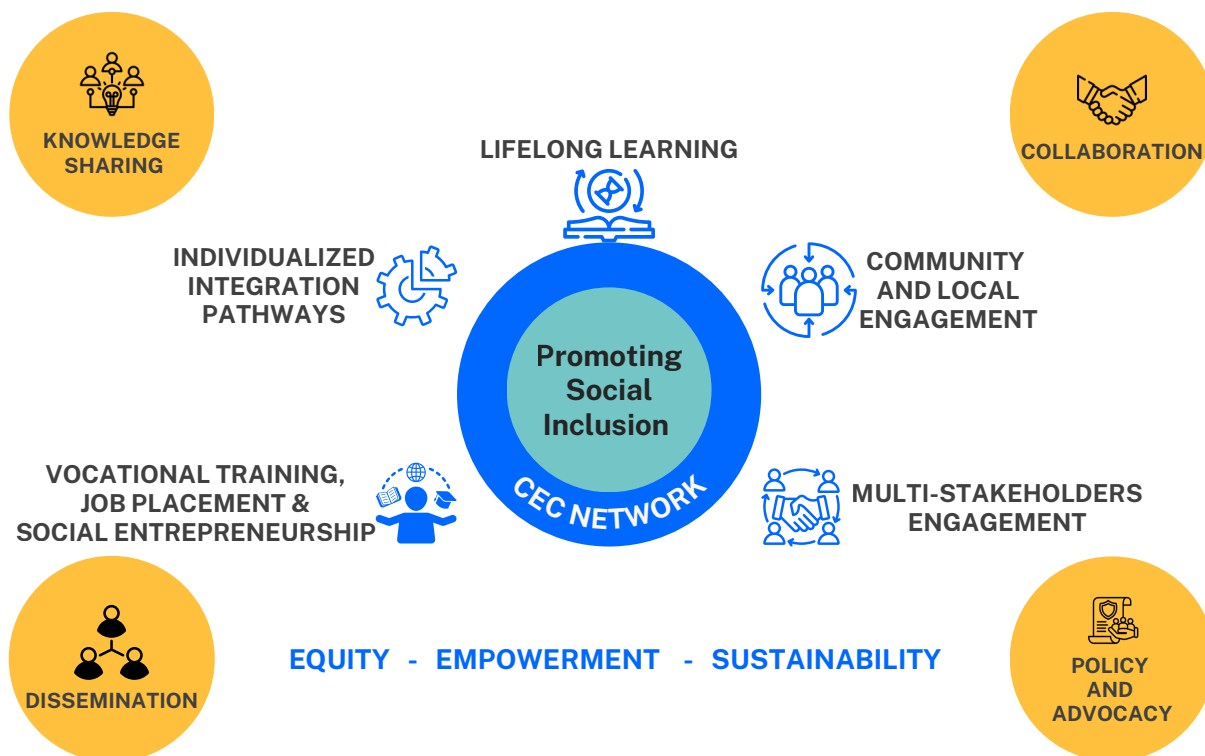
## **WHAT WE DO**

- Help people develop the skills needed to access and remain in the labour market
- Provide pathways to employment through training, workplace experience, rehabilitation, and long-term support
- Promote cooperation, knowledge exchange, and European projects among members
- Contribute to European policy discussions and advocate for inclusive employment and stronger social cohesion



## OUR METHODOLOGY

CEC fosters partnerships with European institutions, public authorities, companies, and civil society, supporting innovation and disseminating successful approaches. Its methodology is based on equity, empowerment, and sustainability, encouraging collaboration, knowledge-sharing, and participatory dialogue through events and strategic partnerships to advance social inclusion across Europe.



# CEC'S GOVERNANCE

## OUR BOARD

CEC governance is ensured by a Board composed of representatives from member organisations, supported by a permanent secretariat based in Brussels.



**Elisabeth Diaz**

*President*  
Fundació Trinijove



**William Ameri**

*Board member*  
AGFE



**Rita Festi**

*Board member*  
Scuola Centrale  
Formazione



**Spyros Amoranitis**

*Board member*  
IRFAM



**Denis Henrard**

*Board member*  
UNESA



**Benjamin Pierson**

*Board member*  
AID

## OUR BOARD



**Paolo Cesana**  
*Board member*  
Fondazione Luigi Clerici



**Maria-Anna  
Paraskeva**  
*Board member*  
Retired EU senior official



**Patrick Torre**  
*Board member*  
Sud Concept

## OUR SECRETARIAT



**Isabelle  
Van de Gejuchte**  
*Director*

## OUR AREAS OF WORK

CEC activities are structured around several core areas of work that support the network's mission to promote social inclusion and employment integration across Europe.



Facilitation of  
member  
exchanges



Promotion of  
members'  
initiatives



Monitoring EU  
policies and  
funding  
opportunities



Representation  
and liaison with  
European  
Commission  
departments



European-level  
advocacy



Build  
partnerships for  
EU projects



Contribution to  
public debate

# MEMBERS

---

Members of the CEC network are actively engaged in a wide range of social inclusion initiatives. Some focus on specific marginalised groups, including immigrants, refugees, homeless individuals, and unemployed or unqualified youth.



## **AGFE (Association for the Management of European Funds)**

AGFE acts as an Intermediate Body for the ESF+ on behalf of the Ministry of Labour and local authorities, co-financing Local Plans for Integration and Employment in several French territories.

## **AID (Integrated Development Actions)**

AID Integrated Development Actions is a network of 27 associations in Wallonia and Brussels delivering locally rooted socio-professional integration projects.



## **BARKA**

Barka Foundation supports the reintegration of excluded groups through mutual help, education, and entrepreneurship across several countries.

# MEMBERS

---



## FONDAZIONE LUIGI CLERICI

Luigi Clerici Foundation operates around 30 branches across several Italian regions, providing education, vocational training, and employment support services.

## IRFAM (Institute for Research, Training and Action on Migration)

IRFAM is a training and research institute linking practice and research on integration and anti-discrimination.



## MÉDIALYS

Médialys is a social integration enterprise employing people far from the labour market within Lyon's public transport network.

## MEK (MESOGEIAKO)

MEK is a licensed lifelong learning and vocational training provider active since 2002 in Greece.



# MEMBERS

---



## META 4 INNOVATIONS

META4 INNOVATIONS is an Austrian research and development organisation designing innovative tools and services in digital learning, entrepreneurship, sustainable development and social inclusion.

## SCF (Scuola Centrale Formazione)

Scuola Centrale Formazione is a national non-profit training network in Italy uniting 51 members across 13 regions.



## SHELTER “SAFE HOUSE”

Shelter “Safe House” is a Latvian NGO providing rehabilitation, protection and integration services for victims of human trafficking, asylum seekers and refugees, in close cooperation with public institutions and civil society networks.

## SUD CONCEPT

Sud Concept Cooperative is a consultancy based in Corsica specialising in employment, training, and integration.



# MEMBERS

---



## FUNDACIÓ TRINIJOVE

Based in Barcelona, Fundació Trinijove promotes social and economic inclusion through integrated training and employment programmes for vulnerable groups.

## TTB (TECHNICAL TRAINING BULGARIA)

Technical Training Bulgaria provides vocational training and consultancy services in EU project development from Sofia since 2009.



## UNESSA FEDERATION

UNESSA represents 547 non-profit organisations active in care, health, and social support across Wallonia and Brussels.



The SKY project concluded with a European seminar held on 9 February 2024 in Brussels. It sought to provide an effective alternative to traditional employment reintegration systems, which often fail to address the realities and constraints of long-term unemployed individuals. Rather than relying on lengthy and complex training programmes, SKY introduced short, targeted micro-trainings closely aligned with labour market needs and co-designed with companies based on real workplace practices.

Placing learners at the centre, the project developed practical and accessible resources drawn from real work situations. More than 150 participants across five European countries benefited, regaining motivation, strengthening self-esteem, and in many cases returning to employment or pursuing further training opportunities.

A key innovation was the introduction of micro-certifications, validated through cooperation between companies, training providers, and participants. Although not yet formally recognised, they support the visibility of acquired skills and enhance employability. Despite challenges such as limited funding and recognition, SKY demonstrated the value of flexible, demand-driven training for improving inclusion and fostering stronger partnerships between businesses and training providers.



The REWIND project aims to support and boost the revival of SME through the acquisition process by employees for continuing the activity under the cooperative model, by supporting a favourable ecosystem. The approach and tools provided by REWIND are designed for the purpose of meeting the needs of different target groups: VET professionals (trainers, teachers, researchers, consultants, coaches, administrators involved in supporting entrepreneurship), employees and learners, and other stakeholders.

As part of the project, the CEC carried out the following actions in 2024:

- Creation of educational videos on intercultural skills: these videos aim to train employees taking over the management of a company to operate effectively in diverse cultural contexts.
- Implementation of a strategy for disseminating the project's results and ensuring follow-up with partners.
- Publication of three newsletters: These newsletters shared key information on the project's activities and progress.
- Submission of a research report: This document includes policy recommendations to foster a supportive ecosystem for social enterprises in Belgium.
- Establishment of a partnership with the European Economic and Social Committee (EESC) to facilitate the organization of the final seminar in Brussels, scheduled for April 8, 2025.

## **Building Trust in Micro- Credentials for Improving Employability** organised by DG EMPL. 28 – 29 MAY 2024

The SKY project was presented during the peer-learning activity: "Building Trust in Micro- Credentials for Improving Employability" organized by DG Employment. The event allowed participants to share their experiences with peers and collectively reflect on effective practices. It was also an opportunity to hear DG EMPL present.

## **CEC'S participation in the EZA SEMINAR** 14-15 NOVEMBER 2024

The CEC took part in the EZA seminar organised by Fondazione Luigi Clerici in Milan. The event centred on Green Jobs to Promote the Employability of Young People and Workers in the context of climate change. Our members—BARKA, MEK, AGFE, and Fundació Trinijove—actively contributed to a series of roundtable discussions, sharing best practices and innovative approaches to sustainability.

## Eu Funding Exclusive Network (EFEN) Annual Event 27 – 28 NOVEMBER

The President of the CEC, Elisabeth Diaz, attended the EFEN EU Funding Network event in Vienna, which gathered over 90 participants from various EU countries and more than 60 organizations from across Europe.

The event included insightful discussion on the Erasmus Plus 2024 Programme, highlighting its strategic priorities across multiple sectors. Participants engaged in dedicated partnership-building workshops, covering diverse funding schemes such as CERV, Alliances for Innovation, Creative Europe, Horizon, and Capacity Building, among others. Dynamic "Speed Dating" sessions between organizations encouraged vibrant exchanges and laid the groundwork for potential collaborations.

The event served as an excellent platform to showcase ongoing CEC projects, establish new connections, and explore synergies to expand the CEC

## Do Your Mob 2024 Event 5 – 6 DECEMBRE 2024

The Director of the CEC, Isabelle Van de Gejuchte participated in the yearly Mobility an Internationalisation event organised by Scuola Centrale Formazione. This year the focus was the relationship between Internationalisation and Wellbeing, with a specific attention on Inclusiveness.

The meeting was attended by 70 participants from 9 European countries. It was an opportunity for the director to provide visibility on the network and the activities of its members and explore partnership opportunities with organisations in Portugal, Malta, Finland and Turkey.

### MEMBERS' MEETING 13 NOVEMBER

The meeting brought members together, both in person and online, to align expectations, review survey findings, and discuss key EU priorities. Discussions focused on improving internal communication, enhancing member engagement, and strengthening the network through partnerships, events, and outreach. Participants also explored advocacy opportunities and ways to increase the network's visibility and impact at both national and European levels.

### WORKING GROUP MEETINGS

In September, the CEC established a working group on European projects, offering members a platform to exchange ideas and develop partnerships. This working group meets online once a month and benefits from the expertise of Marianna Paraskeva, a member of the Board, in European programmes.

To enhance the visibility of the network and its members, the CEC has begun showcasing member-led projects through its website and LinkedIn.

Additionally, the CEC launched its inaugural newsletter at the end of October, featuring updates from the CEC alongside collaborative projects from its members. The newsletter was distributed to a wide audience, including 10000 contacts in Brussels and the broader networks of its members.

# NEW MEMBER FOR CEC

---



The CEC is delighted to welcome EPI CENTAR from North Macedonia as of 1 January 2025. EPI CENTAR has consistently supported North Macedonia's EU accession process by assisting organizations in improving their operations and complying with EU standards and norms. Its expertise includes private sector development, local economic development, and capacity building.

EPI CENTAR's portfolio includes significant programmes supporting marginalized groups, such as Roma communities, youth, and rural populations, with initiatives focused on capacity building and fostering social and economic inclusion.

To guide its work in 2025, the CEC will define five strategic priorities to strengthen collaboration, advocacy, visibility, and network growth across Europe.

First, it will organise the REWIND final event, bringing stakeholders together to assess results and promote cooperative approaches to business continuity. Second, the CEC will expand its involvement in EU-funded projects to boost visibility, secure funding, and foster cross-border collaboration, while exploring opportunities with the Anna Lindh Foundation. Third, the network will reinforce its advocacy by engaging with the Social Economy Intergroup, enhancing its influence on EU policies. Fourth, increasing visibility will be a key focus, through improved communication tools, stronger LinkedIn engagement, and updated messaging.

Finally, the CEC will seek to expand its membership in targeted countries, encouraging collaboration, knowledge exchange, and stronger representation across Europe. Together, these priorities will aim to amplify the network's impact and support its members more effectively.



CEEC

ACTING FOR SOCIAL INCLUSION

Chaussée de Boondael, 6  
1050 Brussels  
Belgium

[cecasbl.org](http://cecasbl.org)  
[info@cecasbl.org](mailto:info@cecasbl.org)

